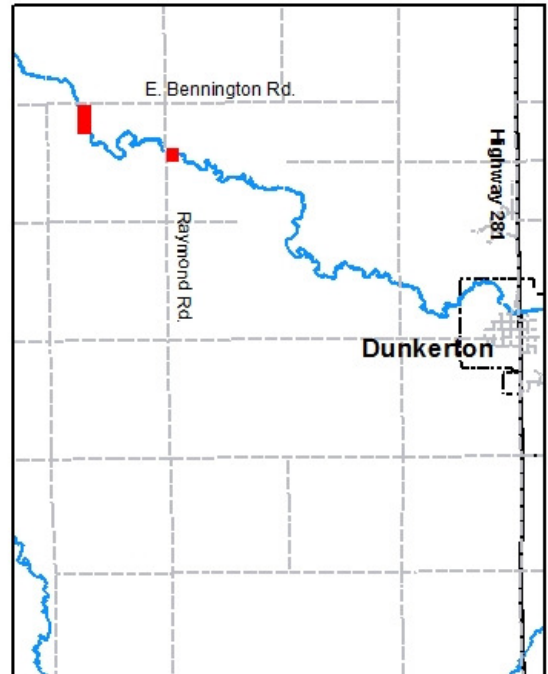
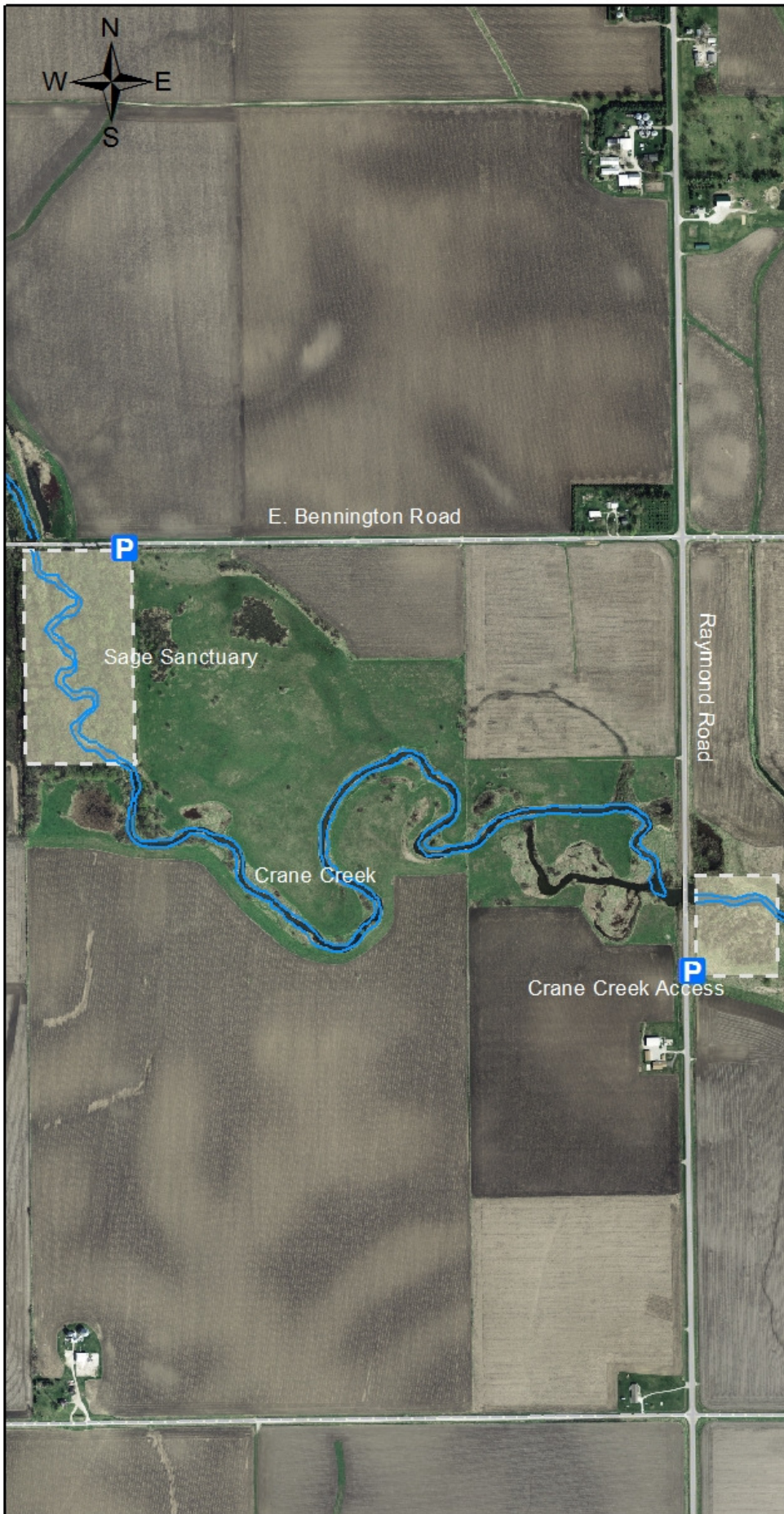


Sage Sanctuary and Crane Creek Access

Managed by
Black Hawk County Conservation Board
1346 Airline Highway
Waterloo, IA 50703
(319) 433-PARK (7275)
www.blackhawkcountyparks.com

Crane Creek Access is a small 5 acre wooded lot located off of Raymond Road. Adjacent to Bennington Road is Sage Sanctuary. This 20 acre woodland provides habitat for deer and waterfowl. Hunting, hiking and fishing are provided by both areas.



Legend	
	Parking
	Hunting
	Park Boundary

0 0.05 0.1 0.2 0.3 0.4 0.5 Miles

DISCLAIMER:
This map does not represent a survey, no liability is assumed for the accuracy of the data delineated herein, either expressed or implied by Black Hawk County, the Black Hawk County Assessor, or their employees. This map is compiled from official records including plats, surveys, recorded deeds, and contracts, and only contains information required for local government purposes. See the recorded documents for more detailed legal information. 2/18/14 S. Tesch 1:11,200