

Casebeer Natural Area

Managed by
 Black Hawk County Conservation Board
 1346 Airline Highway
 Waterloo, IA 50703
 (319) 433-PARK (7275)
www.blackhawkcountyparks.com

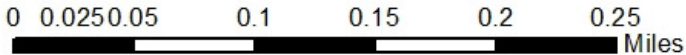
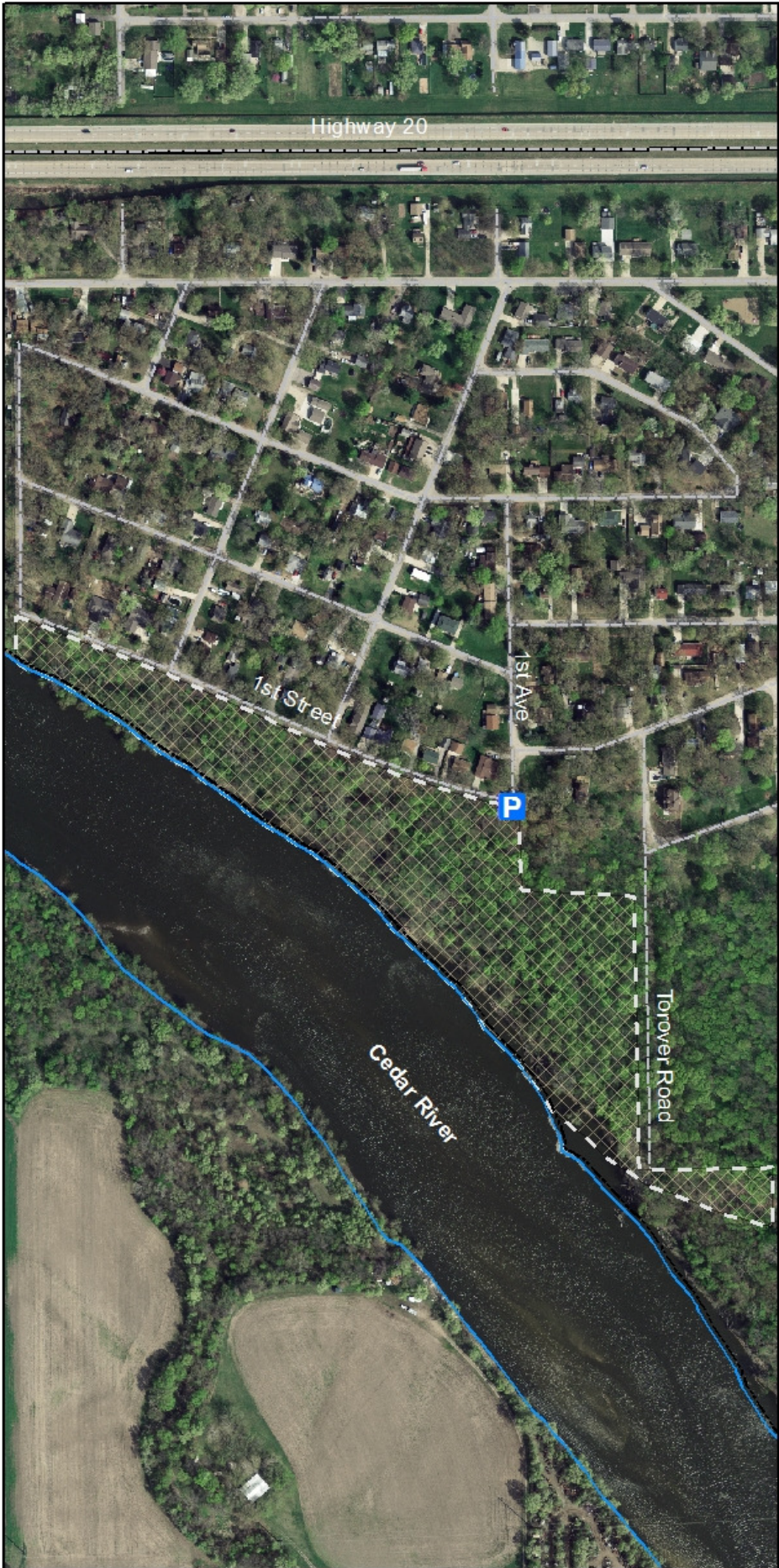


Casebeer Natural Area is 22 acres of floodplain timber just southeast of Evansdale. This area provides hiking, and fishing but NO Hunting is allowed due to city limits. Parking is located at the end of 1st Avenue.



Legend

- Parking
- No Hunting
- Park Boundary



DISCLAIMER: This map does not represent a survey, no liability is assumed for the accuracy of the data delineated herein, either expressed or implied by Black Hawk County, the Black Hawk County Assessor, or their employees. This map is compiled from official records including plats, surveys, recorded deeds, and contracts, and only contains information required for local government purposes. See the recorded documents for more detailed legal information. 2/18/14 S. Tesch 1:5,000